



## Series 1243

### Zetco WaterMarked DZR Brass 90° Ball Valve FI x Flared Lockable Lever

#### DESCRIPTION

A WaterMark approved (to AS 4796 Licence WM-022133) 90° angle ball valve in DZR brass with flared connection inlet for attaching to copper pipe and a female threaded outlet. The robust, anti-vandal DZR brass lever handle enables the valve to be safely locked in either the fully open or closed position for added safety and security.

#### FEATURES

<b>Design</b>	<p>Forged dezincification resistant brass body</p> <p>Arrow on body to indicate flow direction</p> <p>Stainless steel 316 grade ball for superior corrosion resistance</p> <p>Lockable anti-vandal DZR brass lever handle for added security</p> <p>Handle can be locked in the open or closed position</p> <p>PTFE ball seals for smooth, reliable operation</p> <p>Blow-out proof stem to prevent leakage</p>
<b>Production</b>	<p>Manufactured in Italy under ISO 9001 Quality Management System</p> <p>All valves are pressure tested during production</p>
<b>Technical</b>	<p>Female ISO 7/1 Rp (BSP) threaded connection</p> <p>JIS-30° flare connection conforming to AS 3688</p> <p>Flow control: On/off only, not intended for throttling</p> <p>Temperature range: -20°C to 99°C</p> <p>Max. pressure: 2500 kPa (refer to graph)</p>
<b>Options &amp; Variants</b>	<p>Size: DN20 (3/4")</p> <p>Series 1249 WaterMarked 90° angle BSP female x flare lilac lockable</p> <p>Series 1254 WaterMarked 90° angle BSP F&amp;F s/steel ball lockable</p> <p>Series 1247 WaterMarked 90° angle BSP F&amp;F s/steel ball &amp; lockable lever</p> <p>Series 1248 WaterMarked 90° angle BSP F&amp;F, DZR brass handwheel</p>

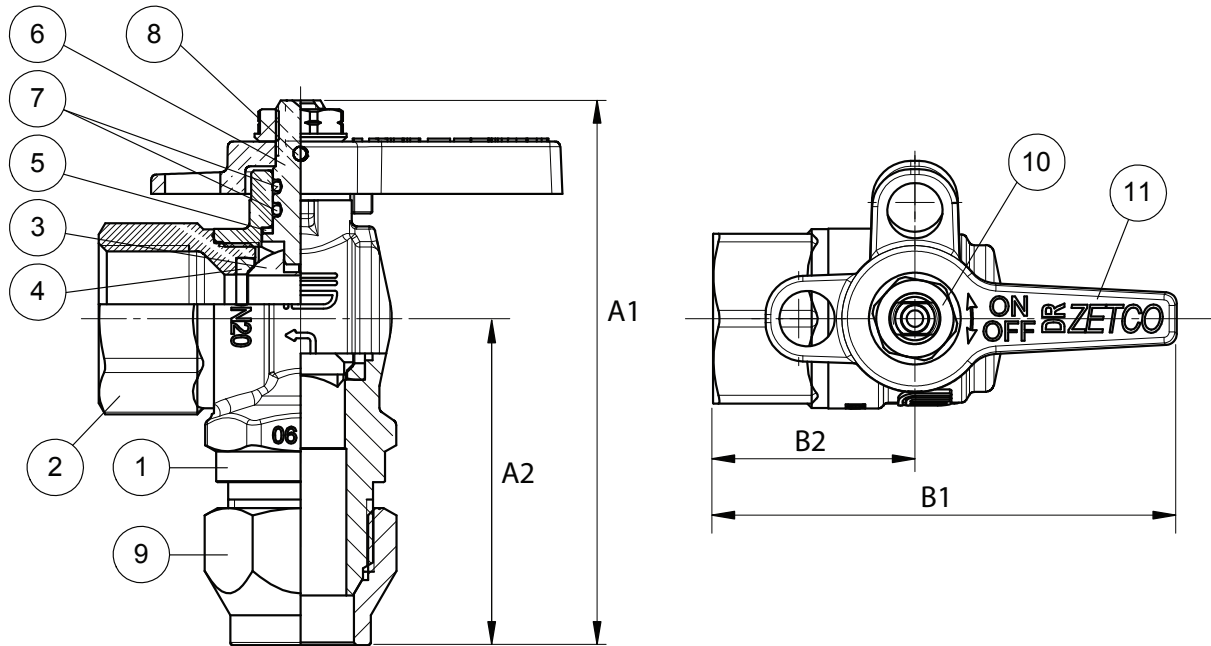


# Series 1243

Zetco WaterMarked DZR Brass 90° Ball Valve  
FI x Flared Lockable Lever



## DIMENSIONAL AND COMPONENT DIAGRAM



## PARTS MATERIALS

POS.	PART	MATERIAL
1	BODY	DZR BRASS
2	END ADAPTOR	DZR BRASS
3	BALL	STAINLESS STEEL 316
4	SEAL	PTFE
5	THRUST WASHER	PTFE
6	STEM	DZR BRASS
7	O-RINGS	EPDM PEROXIDE
8	LOCKING PIN	STAINLESS STEEL 316
9	NUT	DZR BRASS
10	NUT	DZR BRASS
11	HANDLE	DZR BRASS

## DIMENSIONS (mm)

Prod. Code	DN	Size - (mm)	A1	A2	B1	B2	Wgt Kg
1243020	20	3/4" - (19.0)	77.4	38	83.3	36.5	0.338

## PRESSURE/TEMPERATURE GRAPH

