



Series 1263

Zetco WaterMarked DZR Brass 90° Ball Valve Press-fit x Male Lockable Handle

DESCRIPTION

A DZR brass ball valve WaterMark approved to AS 4796 (Licence WM-022133) suitable for water meter installations where a lockable handle is required for added security and safety. The male connection accepts female fittings while the press-fit connection can be crimped using a range of popular V profile tools to form a flame-free seal against copper pipework.

FEATURES

Design	Forged dezincification resistant brass body Arrow on body to indicate flow direction Stainless steel 316 grade ball for superior corrosion resistance Lockable anti-vandal DZR brass lever handle for added security PTFE ball seals for smooth, reliable operation Blow-out proof double o-ring stem sealing to prevent leakage
Production	Manufactured in Italy under ISO 9001 Quality Management System All valves are pressure tested during production Additional testing to DVGW VP 614
Technical	Press-fit connection conforming to AS 3688 Male ISO 7/1 R (BSP) threaded connection Flow control: On/off only, not intended for throttling Temperature range: -20°C to 99°C Max. pressure: 2500 kPa (refer to graph) Use with Viega®, Rothenberger® & KemPress® V-profile tools only Must be installed according to accompanying instructions (see p. 3-4)
Options & Variants	Size: DN20 (3/4") Series 1245 WaterMarked 90° angle BSP M&F lockable Series 6109 WaterMarked press-fit x male lockable lever handle



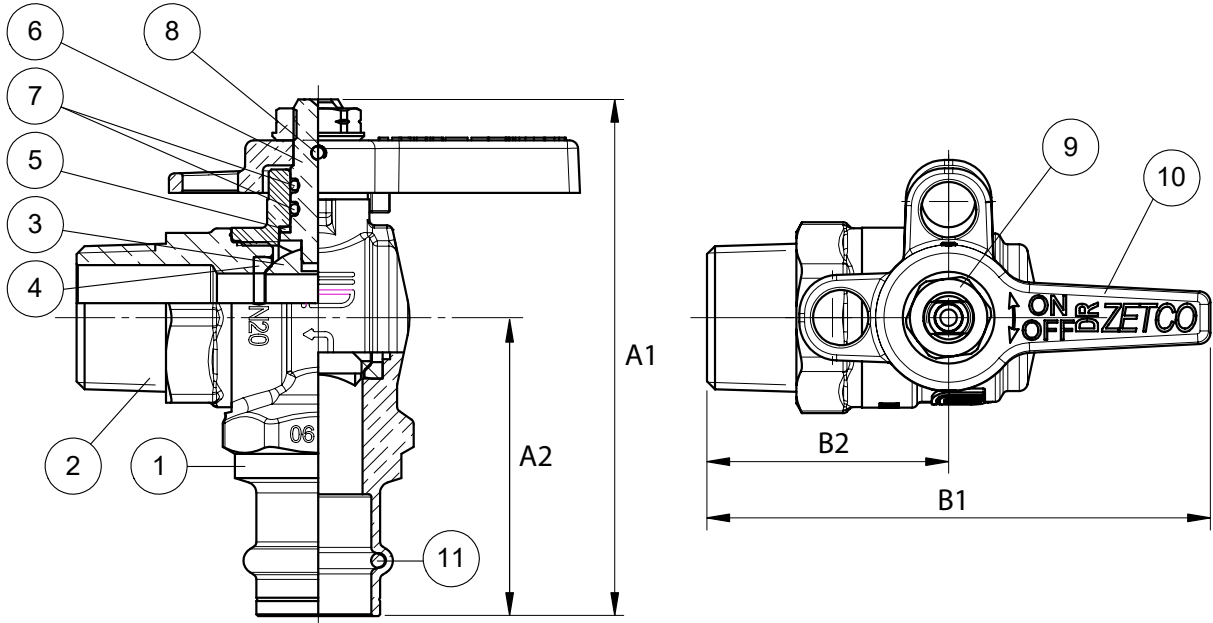
WaterMark
IAPMO WM-022133
AS 4796

Series 1263

Zetco WaterMarked DZR Brass 90° Ball Valve
Press-fit x Male Lockable Handle



DIMENSIONAL AND COMPONENT DIAGRAM



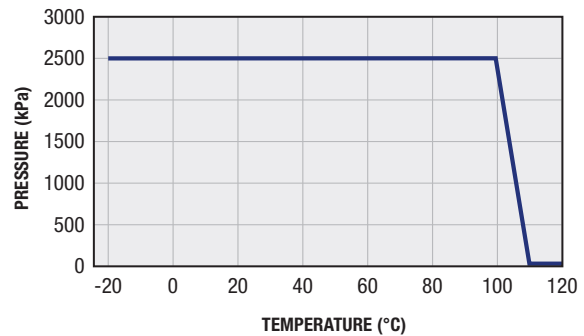
PARTS MATERIALS

POS.	PART	MATERIAL
1	BODY	DZR BRASS
2	END ADAPTOR	DZR BRASS
3	BALL	STAINLESS STEEL 316
4	SEAL	PTFE
5	THRUST WASHER	PTFE
6	STEM	DZR BRASS
7	O-RINGS	EPDM PEROXIDE
8	LOCKING PIN	STAINLESS STEEL 316
9	NUT	DZR BRASS
10	HANDLE	DZR BRASS
11	O-RING	EPDM PEROXIDE

DIMENSIONS (mm)

Prod. Code	DN	Size - (mm)	A1	A2	B1	B2	Wgt Kg
1263020	20	3/4" - (19.0)	93.5	54	92	44	0.391

PRESSURE/TEMPERATURE GRAPH





Press-fit Information

For use with Viega®, Rothenberger®, KemPress® V-profile tools only

IMPORTANT INSTALLATION INSTRUCTIONS

Follow each step carefully

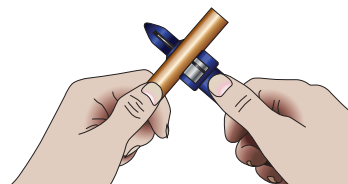


STEP 1

Refer to the design guidelines overleaf for important dimensions which must be considered prior to installation.

Use only Type A & B copper pipe complying with AS 1432.

Cut the copper pipe to the required length.



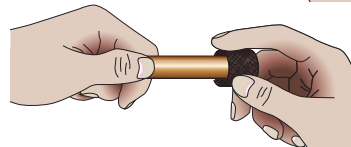
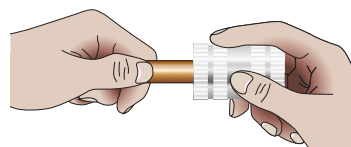
STEP 2

Carefully deburr the end of the pipe;

- INSIDE to minimise turbulence and pressure loss, and
- OUTSIDE to avoid damage to the o-ring during insertion.

For existing installations, ensure that the copper pipe complies with AS 1432 and is free of defects and in good condition.

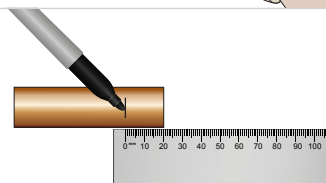
Clean the end of the pipe with emery paper or a soft scourer.



STEP 3

Measure and mark the correct insertion depth on the copper pipe.

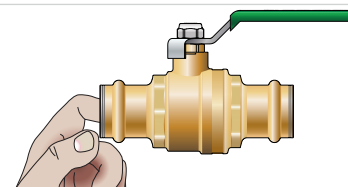
Size (mm)	15	20	25	32	40	50
Depth (mm)	17	22	23	25	31	39



STEP 4

Ensure that you are using the correct valve or fitting for your application (water or gas) and the o-rings are correctly positioned.

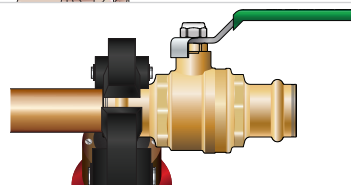
Check that the ends are completely free of swarf, sharp metal or other debris which may cause damage the o-rings.



STEP 5

Push the valve or fitting onto the copper pipe up to the insertion depth. Recheck engagement with the pipe prior to pressing.

Rest the raised bump in the groove of the press tool and operate press tool according to manufacturer's instructions. Inspect joint.



NOT SUITABLE FOR

Solar hot water systems, medical gases, refrigeration and air-conditioning gases, acetylene, urea solution, glycerin triacetate, coolant inhibitor, sodium hydroxide or ammoniac gases.

WARNING DO NOT USE MINERAL OIL TO LUBRICATE THE O-RINGS

WATER APPLICATIONS

Medium	Potable water
Max. Temp.	110°C
Max. Pressure	2500 kPa

GAS APPLICATIONS

Medium	NG, LPG
Max. Temp.	100°C
Max. Pressure	2100 kPa*

*According to AS 5601 Table 4.1, operating pressure of consumer gas piping systems containing copper tube is limited to 200 kPa. Disclaimer: Zetco Valves Pty Ltd will not accept responsibility for damage caused by failure to follow the instructions & warnings provided.

Also available for download at www.zetco.com.au



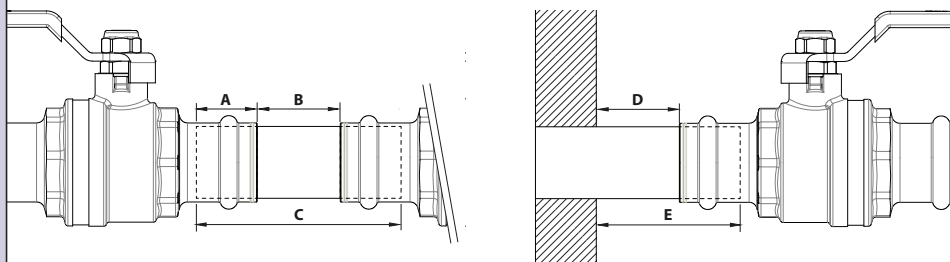
Press-fit Information

For use with Viega®, Rothenberger®, KemPress® V-profile tools only
INSTALLATION DESIGN INFORMATION
 Follow carefully to avoid damage



DESIGN GUIDE

SPACE REQUIREMENTS



The table below shows the minimum distances required between a press joint and other objects.

Nom. Size mm	Pipe OD mm	A mm	B mm	C mm	D mm	E mm
DN15	12.70	17	10	50	60	80
DN20	19.05	22	10	60	60	85
DN25	25.40	23	10	62	60	86
DN32	31.75	25	20	76	60	88
DN40	38.10	31	20	88	60	94
DN50	50.80	39	20	110	60	106

BRAZING & SOLDERING

Brazing or soldering close to press joints may result in damage to the o-rings.
 The table below shows the minimum distance required between a press joint and any brazing activity. In cases where this distance cannot be achieved, ensure that the valve or fitting is adequately protected from heat and kept cool during the brazing procedure.

Size (mm)	15	20	25	32	40	50
Min. Clearance	350	500	650	800	1000	1300



WARNING

Unpressed connections may not be detected during post-installation pressure testing due to a temporary sealing effect of the o-rings. To ensure that correct sealing has been achieved, visually inspect every joint to ensure that each one is pressed correctly.

The most recent version of this information sheet, plus additional technical information can be accessed at the Zetco website: www.zetco.com.au

Disclaimer: Zetco Valves Pty Ltd will not accept responsibility for damage caused by failure to follow the instructions & warnings provided.

© 06-2019

Also available for download at www.zetco.com.au