



## Series 2808

1-Piece  
Stainless Steel  
Spring Check Valve  
NPT Threaded

### FEATURES

MANUFACTURED IN TAIWAN (R.O.C.)

STAINLESS STEEL 316

MACHINED FROM BAR

HIGH PRESSURE

METAL TO METAL SEAT

CAN BE INSTALLED IN HORIZONTAL OR VERTICAL POSITION

NOT WATERMARKED AND NOT SUITABLE FOR INSTALLATIONS THAT  
MUST BE AS/NZS 3500 COMPLIANT (DRINKING OR NON-DRINKING WATER)

ALL VALVES PRESSURE TESTED DURING PRODUCTION

SIZE RANGE: 6MM TO 25MM

### PRESSURE AND TEMPERATURE RATINGS

TEMPERATURE RANGE: -50°C TO 420°C

MAXIMUM OPERATING PRESSURE AT NOMINAL TEMPERATURES: 6000 PSI (41,300kPa)

CRACKING PRESSURE: 3 PSI

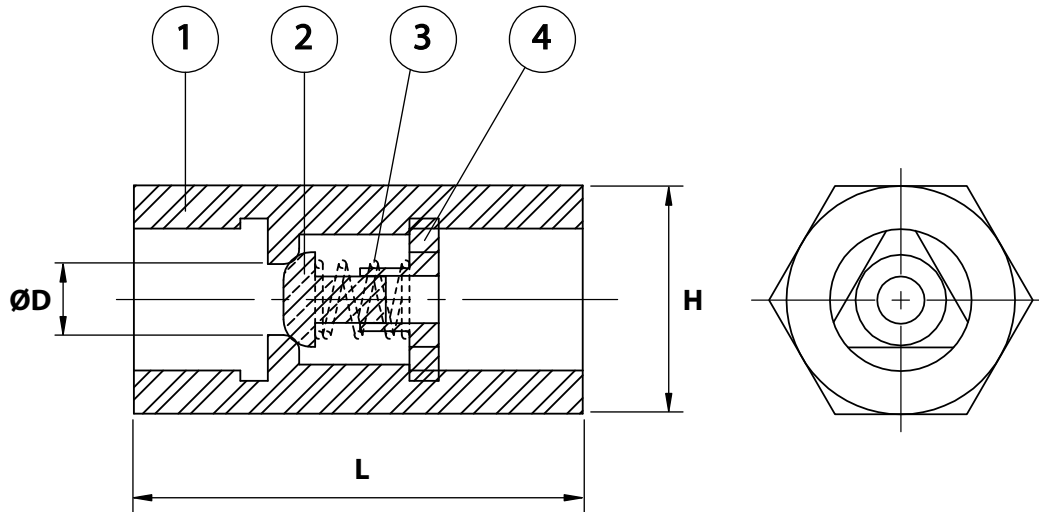
# Series 2808

1-Piece Stainless Steel

Spring Check Valve NPT Threaded



## DIMENSIONAL AND COMPONENT DIAGRAM



### MATERIALS

POS.	PART NAME	MATERIALS
1	BODY	STAINLESS STEEL 316
2	DISC	STAINLESS STEEL 316
3	SPRING	STAINLESS STEEL 316
4	SPRING HOLDER	STAINLESS STEEL 316

### DIMENSIONS - mm

Prod. Code	Size	L	H	ØD	Kv	Wgt kg
2808006	6	44	17	5	0.45	0.085
2808010	10	48	21	7	0.60	0.130
2808015	15	57	26	9	0.80	0.208
2808020	20	70	32	13	1.25	0.579
2808025	25	86	38	15	1.55	0.754

### PRESSURE/TEMPERATURE DIAGRAM

