



## Series 4640 & 4641

### Zetco WaterMarked Stainless Steel Flanged Swing Check Valve

#### DESCRIPTION

A high quality 316 grade stainless steel swing check valve with a bolted bonnet, WaterMark approved to AS 1628 (Licence WM-022953). The flanges are available pre-drilled to either Table E or ANSI 150 to allow for different pipe connections, while the body provides full flow capacity and reliable prevention of flow reversal in steam lines or potable water supplies.

#### FEATURES

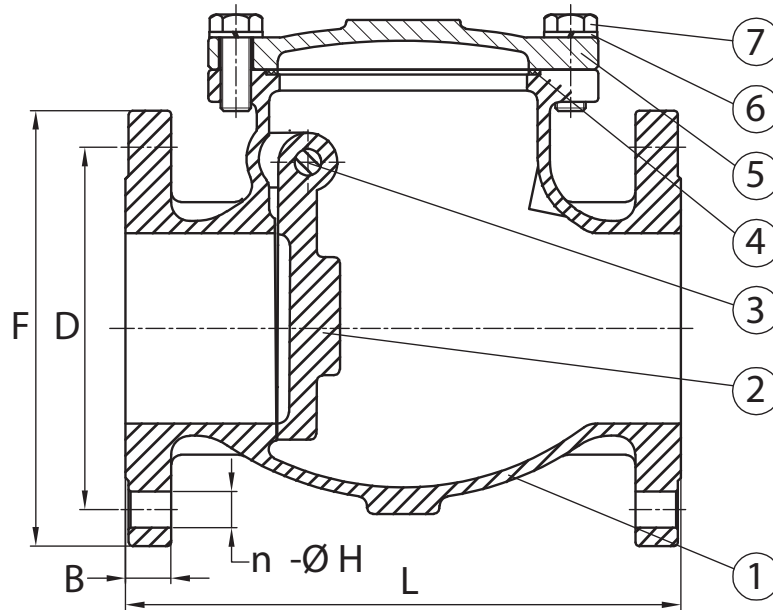
<b>Design</b>	<p>Investment cast body and disc in stainless steel 316 grade</p> <p>Bolted bonnet for easy in-line maintenance</p> <p>Suitable for use with potable water and steam</p> <p>PTFE bonnet seal for superior leak prevention</p> <p>Arrow on body to indicate flow direction</p>
<b>Production</b>	<p>Manufactured in China under ISO 9001 Quality Management System</p> <p>All valves are pressure tested to API 598 during production</p>
<b>Technical</b>	<p>Face-to-face dimensions to ISO 5752 Series 10 (ANSI B16.10)</p> <p>AS 2129 Table E flange connections (4640 Series)</p> <p>ANSI B16.5 150 flange connections (4641 Series)</p> <p>Designed to ANSI B16.34</p> <p>Flow capacity: Full flow design in conformance with AS 1628</p> <p>Flow orientation: Horizontal or vertical</p> <p>Max. pressure water: 362 PSI @ 100°F (2500 kPa @ 37°C)</p> <p>Max. pressure steam: 550 kPa @ 160°C (refer to graph)</p>
<b>Options &amp; Variants</b>	<p>Size range: DN25 (1") to DN100 (4")</p> <p>Series 4640 &amp; 4641 non-WaterMarked in 150mm to 200mm</p> <p>Series 4055 WaterMarked stainless steel swing check valve F&amp;F</p> <p>Series 1808 WaterMarked bronze flanged swing check valve</p>

# Series 4640 & 4641

Zetco WaterMarked Stainless Steel  
Flanged Swing Check Valve



## DESCRIPTION



## PARTS MATERIALS

POS.	PART	MATERIAL
1	BODY	STAINLESS STEEL 316
2	DISC	STAINLESS STEEL 316
3	HINGE PIN	STAINLESS STEEL 316
4	GASKET	PTFE
5	BONNET	STAINLESS STEEL 316
6	SPRING WASHER	STAINLESS STEEL 304
7	BOLT	STAINLESS STEEL 304

## DIMENSIONS (mm)

Table E	Size	F	D	B	L	n - ØH	Kv	Wgt Kg
4640025	25	115	83	11.1	127	4-14	110	2.60
4640032	32	120	87	12.7	140	4-14	140	3.40
4640040	40	135	98	14.3	165	4-14	205	4.70
4640050	50	150	114	16	203	4-18	310	7.83
4640065	65	165	127	18	216	4-18	650	11.6
4640080	80	185	146	19	241	4-18	940	14.7
4640100	100	215	178	24	292	8-18	1205	28.1
ANSI 150	Size	F	D	B	L	n - ØH	Kv	Wgt Kg
4641025	25	110	79.5	11.1	127	4-16	110	2.60
4641032	32	117	89.5	12.7	140	4-16	140	3.40
4641040	40	127	98.5	14.3	165	4-16	205	4.70
4641050	50	152	120.5	16	203	4-19	310	7.83
4641065	65	180	139.5	18	216	4-19	650	11.6
4641080	80	190	152.5	19	241	4-19	940	14.7
4641100	100	229	190.5	24	292	8-19	1205	28.1

## PRESSURE/TEMPERATURE GRAPH

